

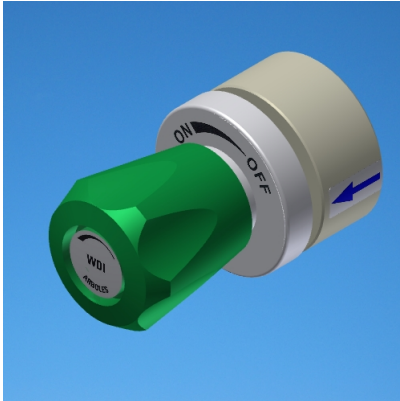


1719

LABORATORY TAPS - VALVES AND OULETS FOR FUME HOODS

Front control valve in polypropylene, inlet and outlet G1/4" female, for special waters

Plastic headwork



TECHNICAL FEATURES

Media: Special Waters

Maximum pressure: 4 bar

Maximum temperature: 48° C

Fluid identification: EN 13792

Design: DIN 12918-1

Inlet / Outlet: Female thread ISO 228 G1/4"

Main materials

Tap body: Polypropylene

Headwork: Plastic, 1/4 turn ceramic sealing

Handle: ABS

*Flange: ABS, white colour**

**Options without price supplement:*

- Dark grey RAL 7001

- Light grey RAL 7035