

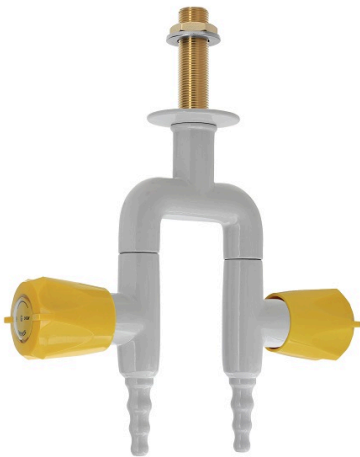


# 6432

LABORATORY TAPS - TAPS

Two way opposite taps for burning gas, pendant mounted, fixed nozzle

"Push-turn" ceramic headwork



## TECHNICAL FEATURES

Media: Burning Gas

Maximum pressure: 0.2 bar

Fluid identification: EN 13792

Design: DIN 12918-2

Nozzle: DIN 12898

Inlet: Male thread ISO 228 G3/8" x 60 mm

## Main materials

Tap body: Brass

Headwork: Brass, "push - 1/4 turn" ceramic sealing

Handle: ABS

Anticorrosive plastic coating:

Polyamide with a thickness of 250-300 microns, light grey colour RAL 7035

## Options without price supplement:

- Dark grey RAL 7001
- White
- Black

## Options with price supplement:

- Removable nozzle